



# Look at Us!

## Check out The Rangelands Partnership's Radically Redesigned Websites

Amber Dalke, Barbara Hutchinson, Sheila Merrigan, Sarah Noelle, Jeanne Pfander, Matt Rahr, and George Ruyle



### New and Expanded Collections

Access to more than 20,000 resources to serve research, education, and extension needs

**Society for Range Management**  
SRM Annual Meeting and Trade Show abstracts plus *JRM* and *Rangelands* articles

**Grassland Society of Southern Africa**  
Complete editions of the *African Journal of Range and Forage Science* and more

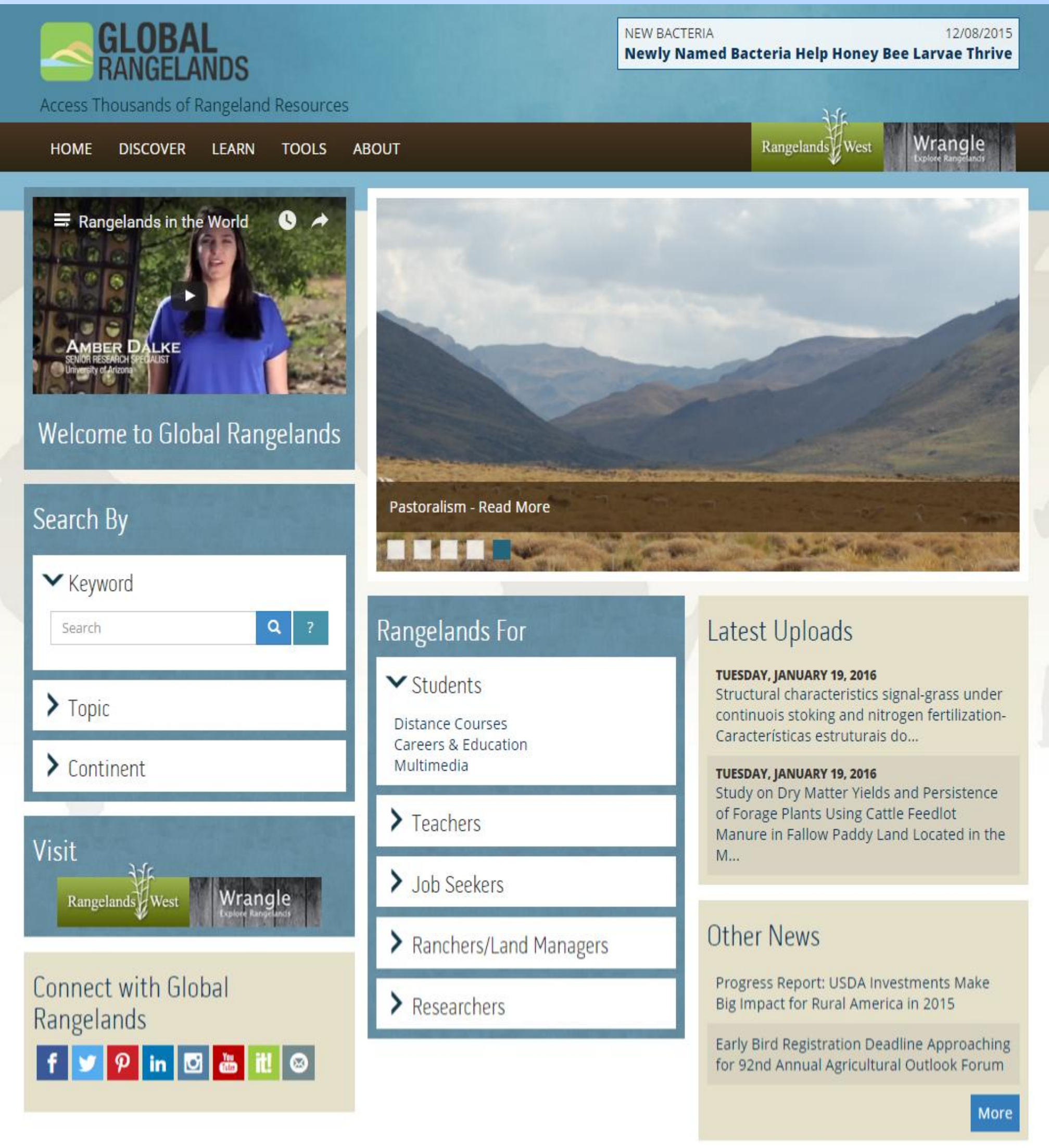
**Food and Agriculture Organization**  
Full-text documents from developing and developed countries

**Australia**  
Complete editions of *The Rangeland Journal* (CSIRO) and all conference proceedings from the Australian Rangelands Society

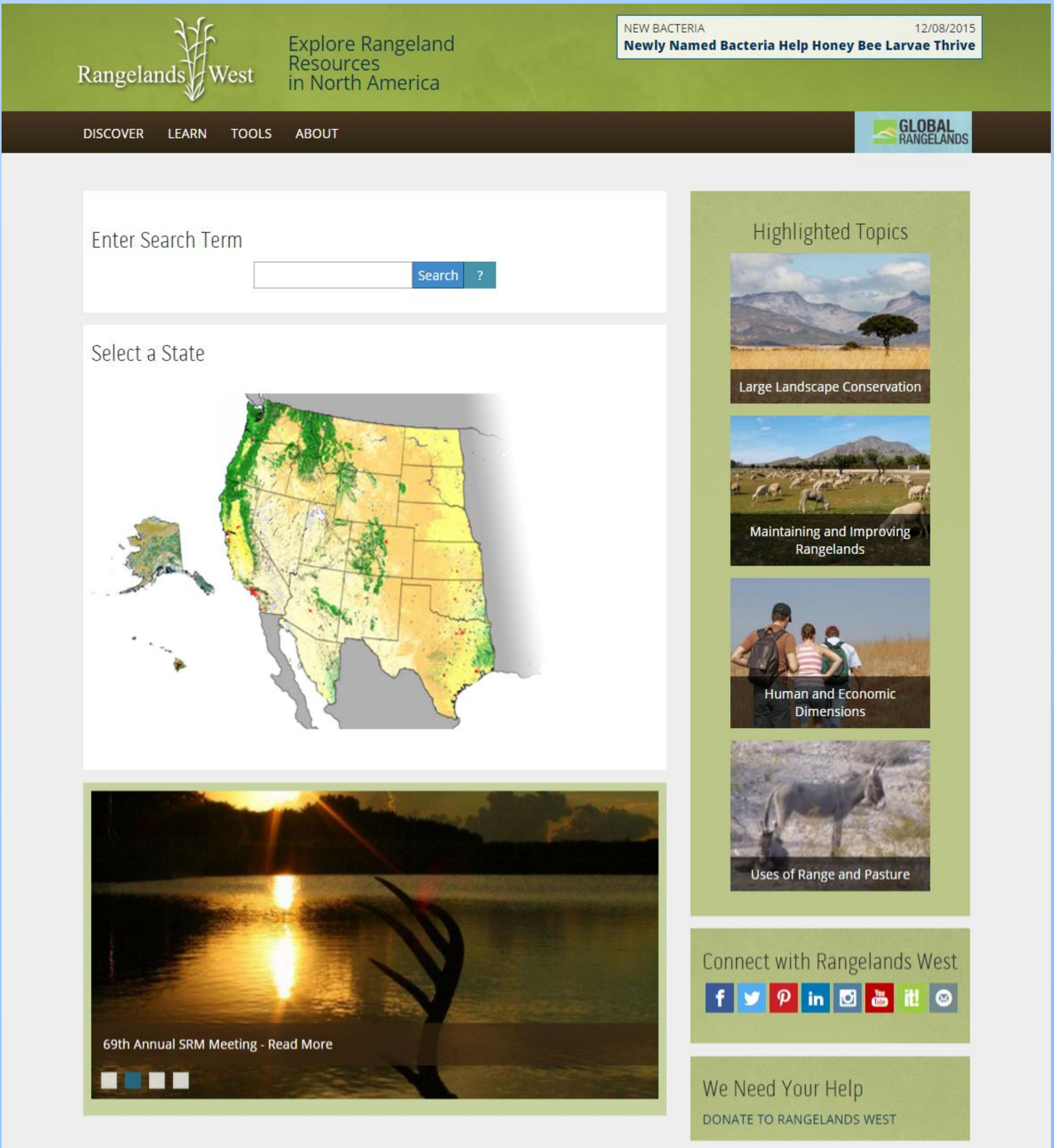
**California – Article Datastore**  
Science-based information on natural resource management including rangelands, wildlife, water/air quality, ecosystem services.

**Iran**  
Includes articles from the *Journal of Range Science*

### globalrangelands.org

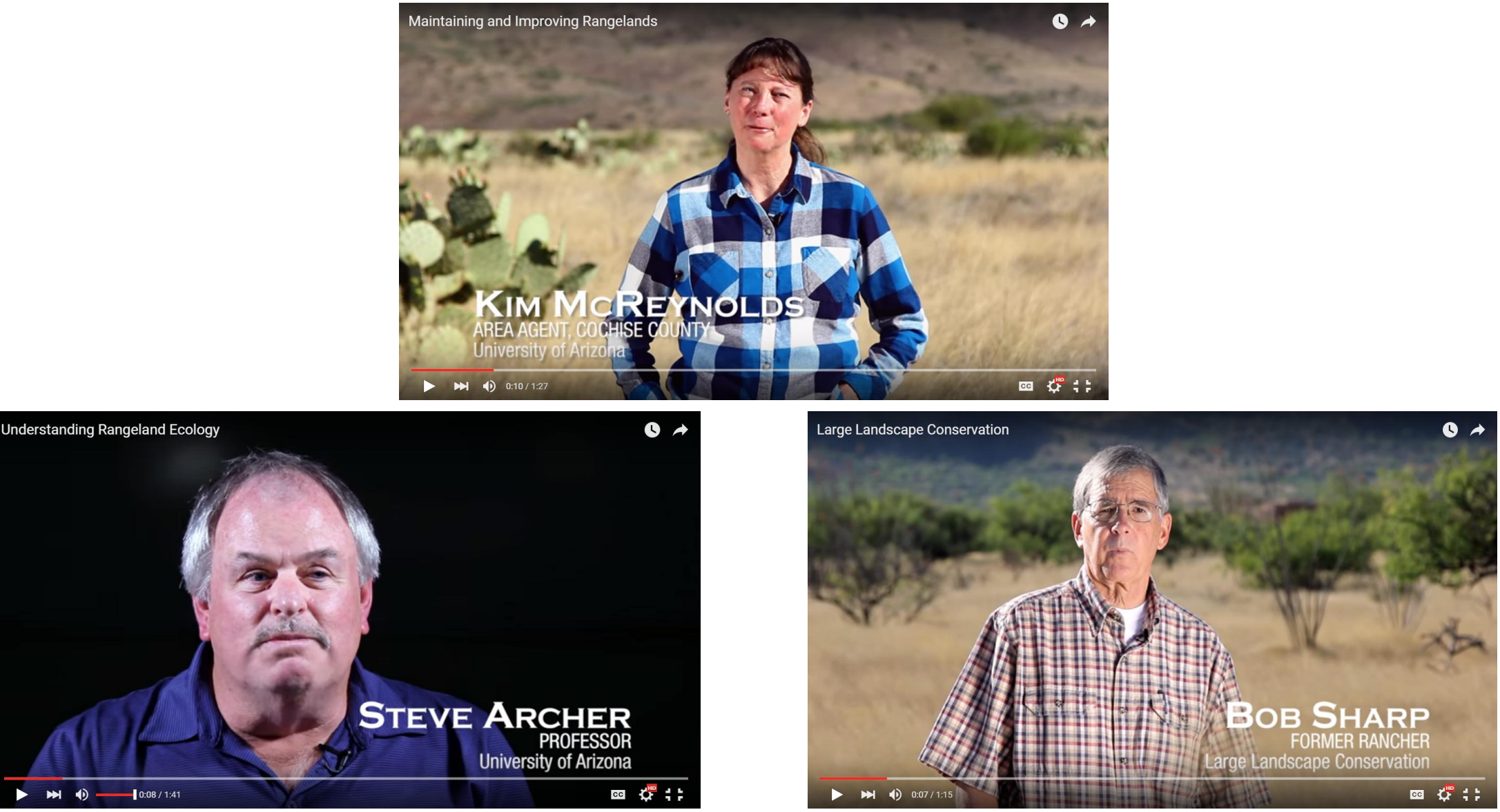


### rangelandswest.org

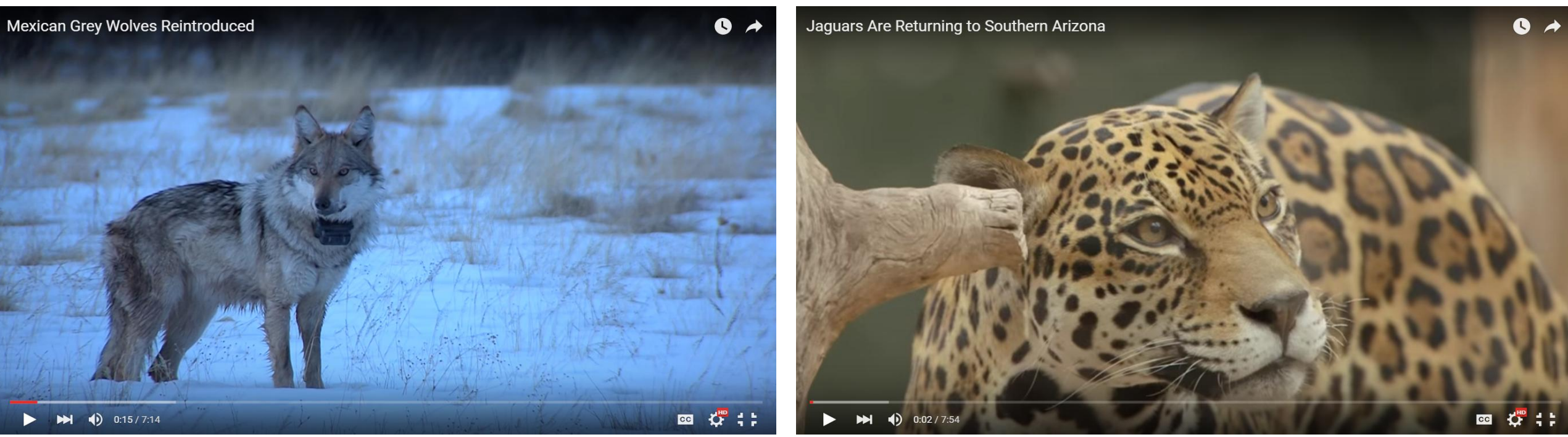


### Trending Topics and New Videos

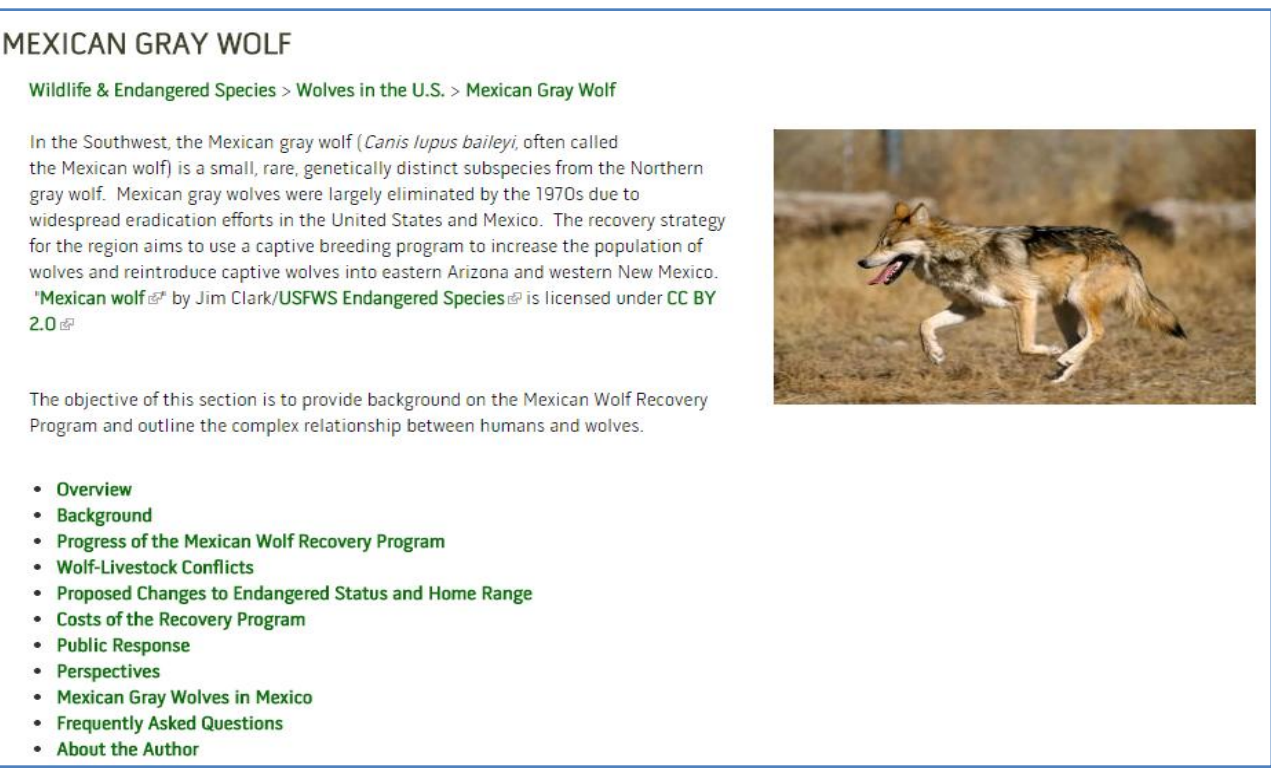
New content added along with introductory videos



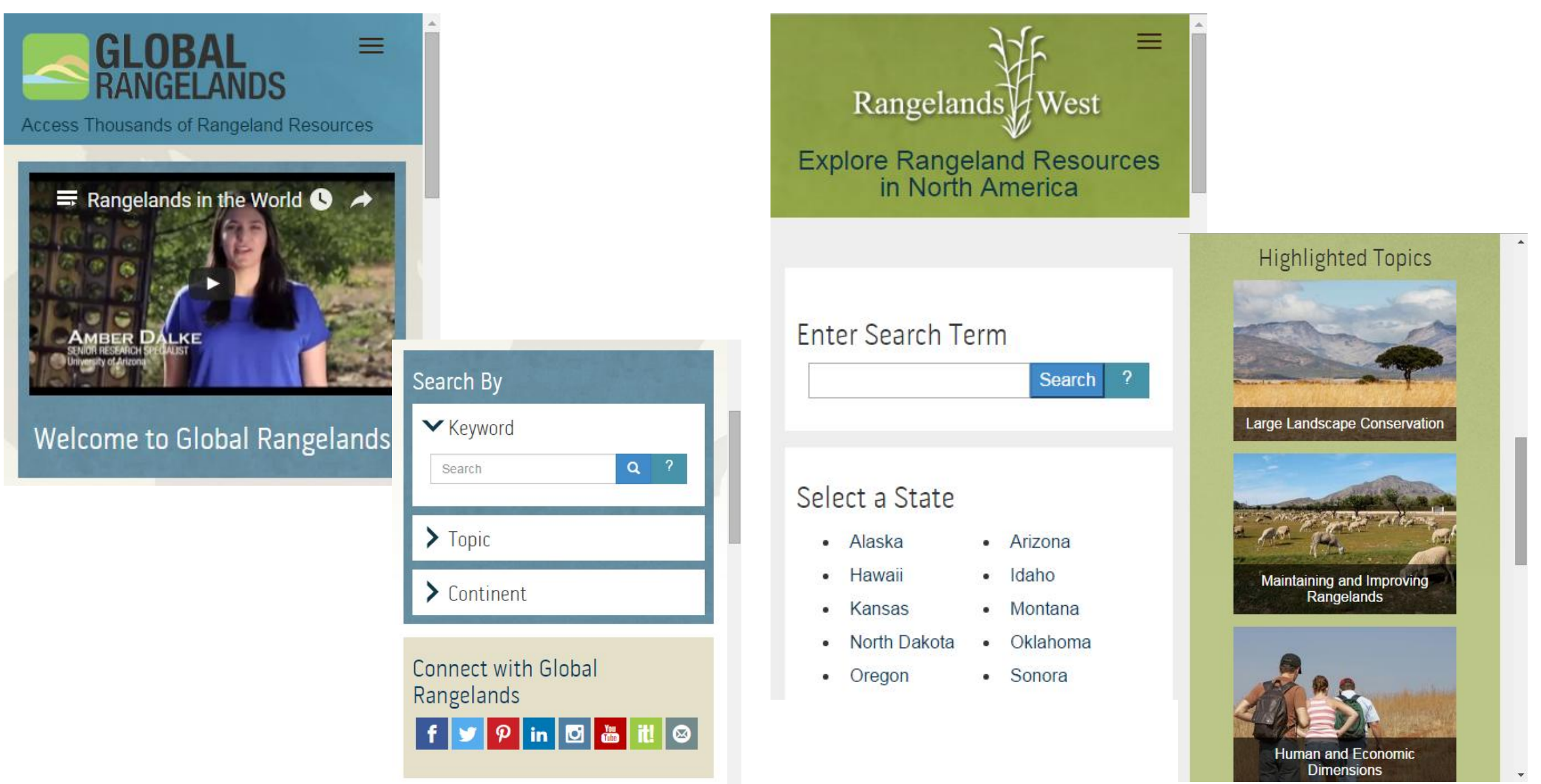
Series of videos on current rangelands issues including wildlife and generational transfer



Comprehensive Trending Topics sections on rangeland issues including the Mexican gray wolf and sage grouse



### Mobile and Tablet Friendly



### Resources for Students, Teachers, Job Seekers

**Careers and Education**  
Find out who hires rangeland managers, career choices for rangelands students, and colleges/universities that offer rangeland courses

**Range Education at a Distance**  
Catalog of distance-format rangeland courses to update your rangeland skills and knowledge

Search by keyword, category, or university

**Rangeland Teaching Clearinghouse**  
Rangeland ecology and management course material for all grade levels



Website redesign was based on input from stakeholders and Partners with financial support from several NIFA grants

